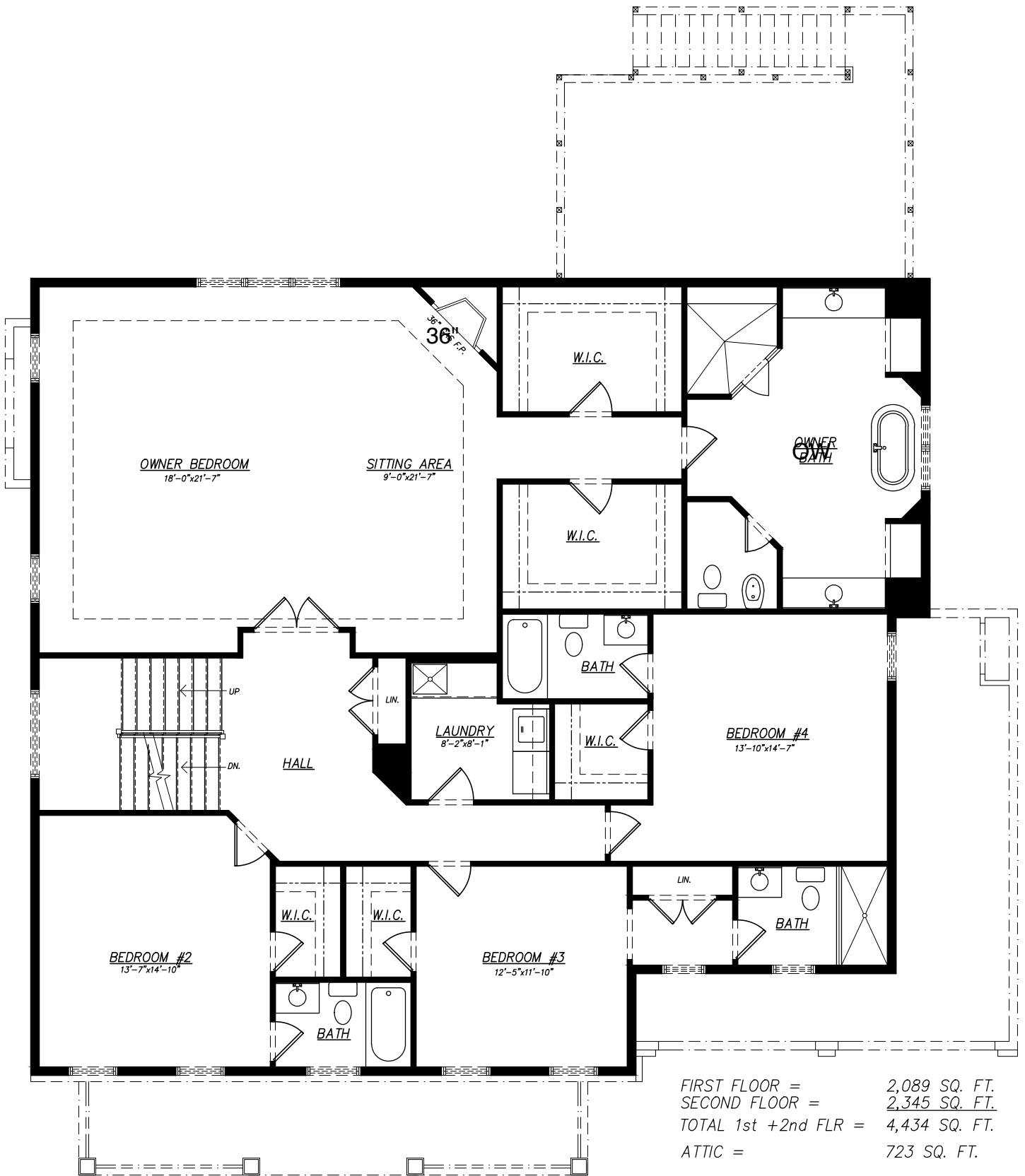




**FIRST FLOOR PLAN**  
**2907 N. KENSINGTON STREET**  
 ARLINGTON, VIRGINIA 22207

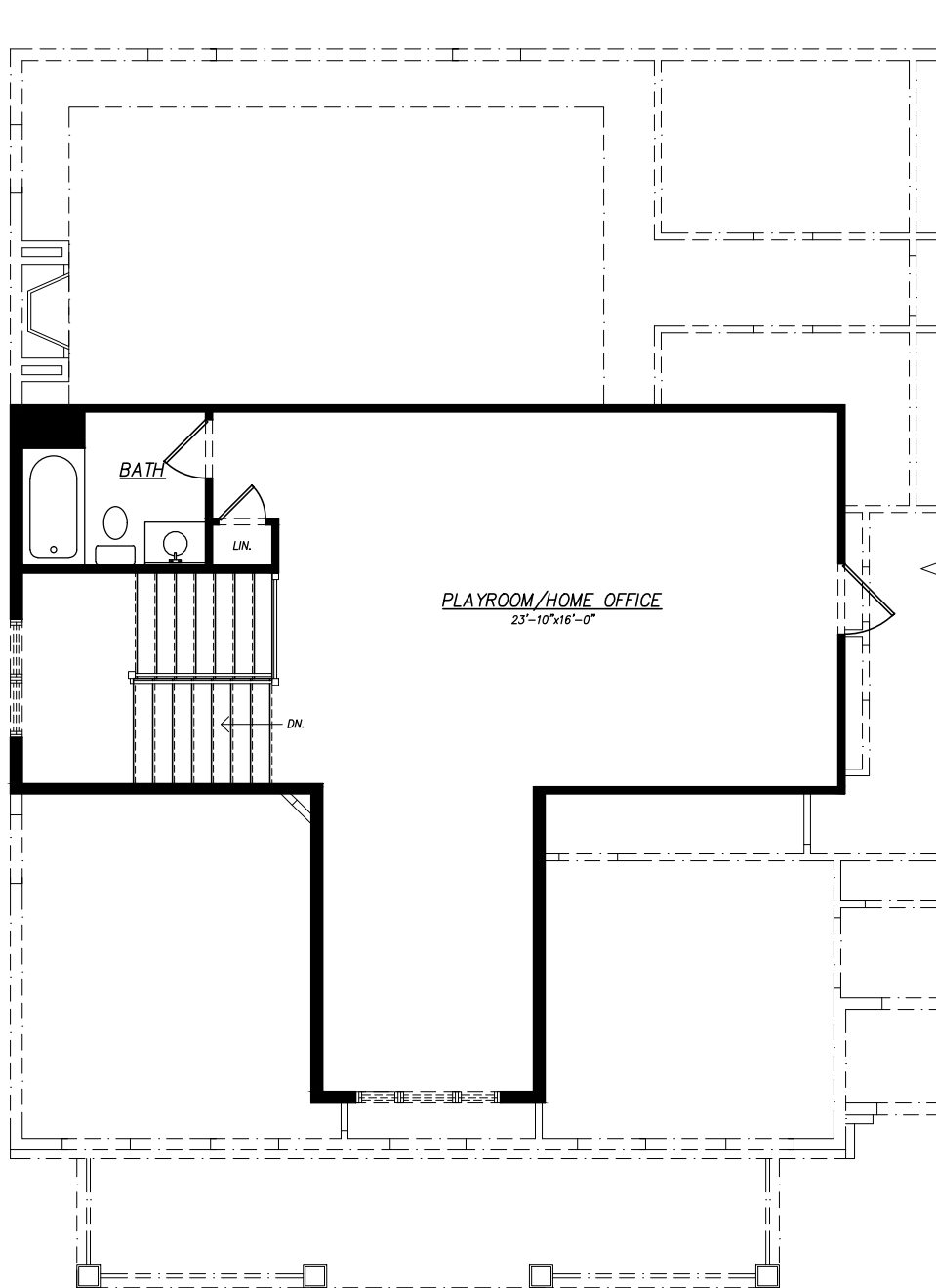
|                      |               |
|----------------------|---------------|
| FIRST FLOOR =        | 2,089 SQ. FT. |
| SECOND FLOOR =       | 2,345 SQ. FT. |
| TOTAL 1st +2nd FLR = | 4,434 SQ. FT. |
| ATTIC =              | 723 SQ. FT.   |

|                     |               |
|---------------------|---------------|
| FINISHED BASEMENT = | 2,013 SQ. FT. |
| UNFIN. BASEMENT =   | 67 SQ. FT.    |
| 2 CAR GARAGE =      | 525 SQ. FT.   |
| FRONT PORCH =       | 165 SQ. FT.   |
| DECK =              | 268 SQ. FT.   |



**SECOND FLOOR PLAN**  
**2907 N. KENSINGTON STREET**  
 ARLINGTON, VIRGINIA 22207

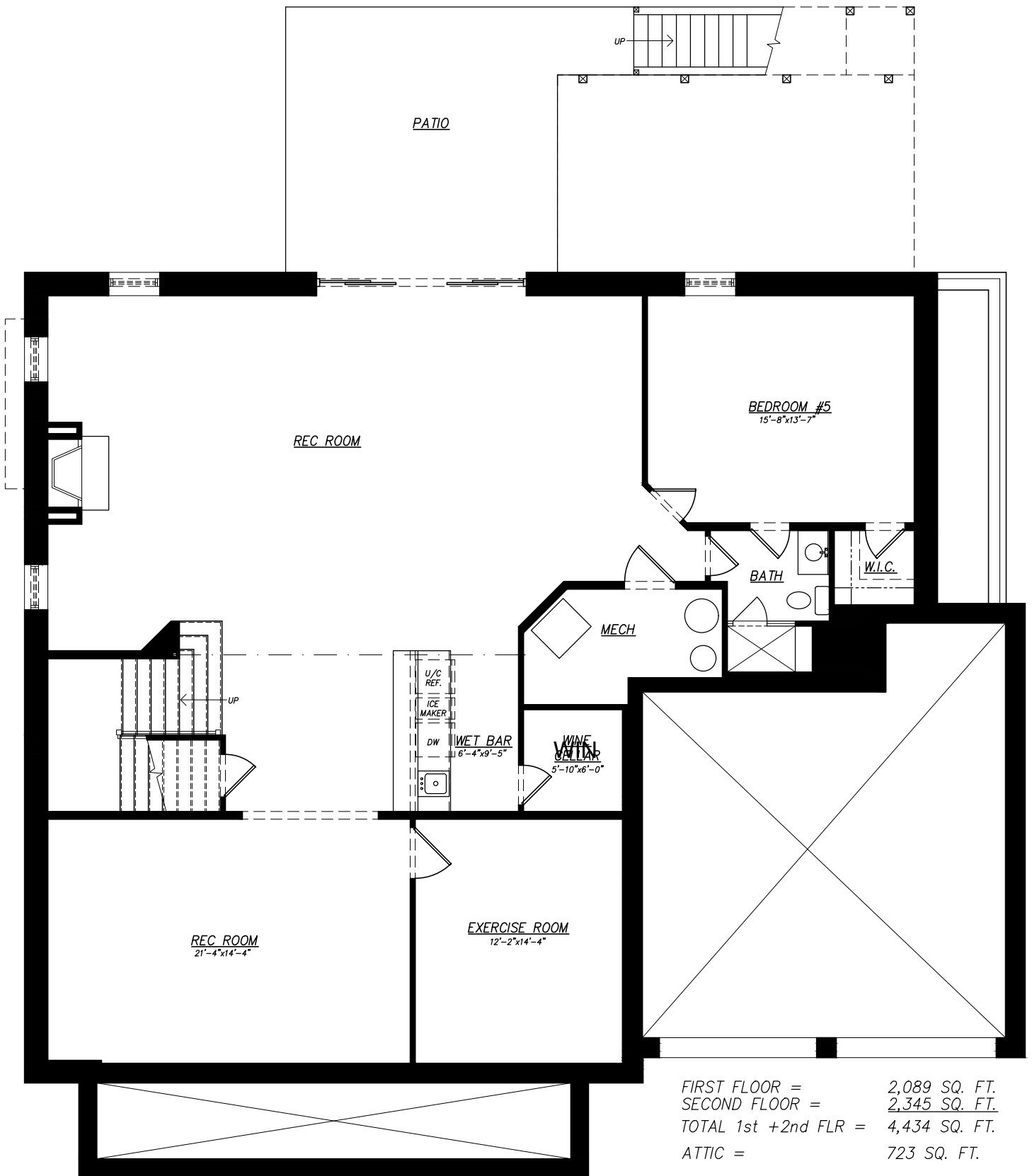
|                      |               |
|----------------------|---------------|
| FIRST FLOOR =        | 2,089 SQ. FT. |
| SECOND FLOOR =       | 2,345 SQ. FT. |
| TOTAL 1st +2nd FLR = | 4,434 SQ. FT. |
| ATTIC =              | 723 SQ. FT.   |
|                      |               |
| FINISHED BASEMENT =  | 2,013 SQ. FT. |
| UNFIN. BASEMENT =    | 67 SQ. FT.    |
| 2 CAR GARAGE =       | 525 SQ. FT.   |
| FRONT PORCH =        | 165 SQ. FT.   |
| DECK =               | 268 SQ. FT.   |



**LOFT FLOOR PLAN**

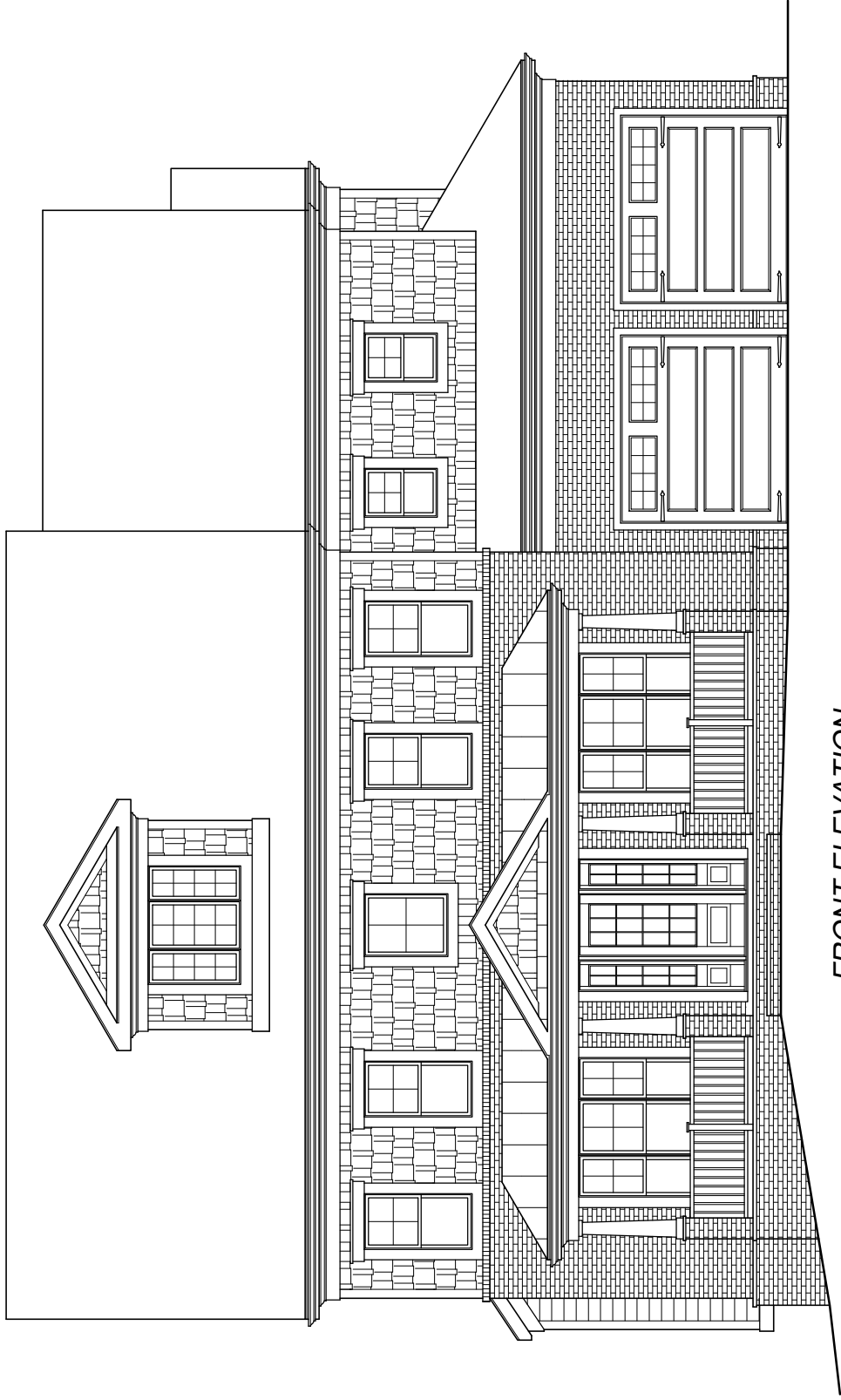
**2907 N. KENSINGTON STREET**  
 ARLINGTON, VIRGINIA 22207

|                      |                      |
|----------------------|----------------------|
| FIRST FLOOR =        | 2,089 SQ. FT.        |
| SECOND FLOOR =       | <u>2,345 SQ. FT.</u> |
| TOTAL 1st +2nd FLR = | 4,434 SQ. FT.        |
| ATTIC =              | 723 SQ. FT.          |
|                      |                      |
| FINISHED BASEMENT =  | 2,013 SQ. FT.        |
| UNFIN. BASEMENT =    | 67 SQ. FT.           |
| 2 CAR GARAGE =       | 525 SQ. FT.          |
| FRONT PORCH =        | 165 SQ. FT.          |
| DECK =               | 268 SQ. FT.          |



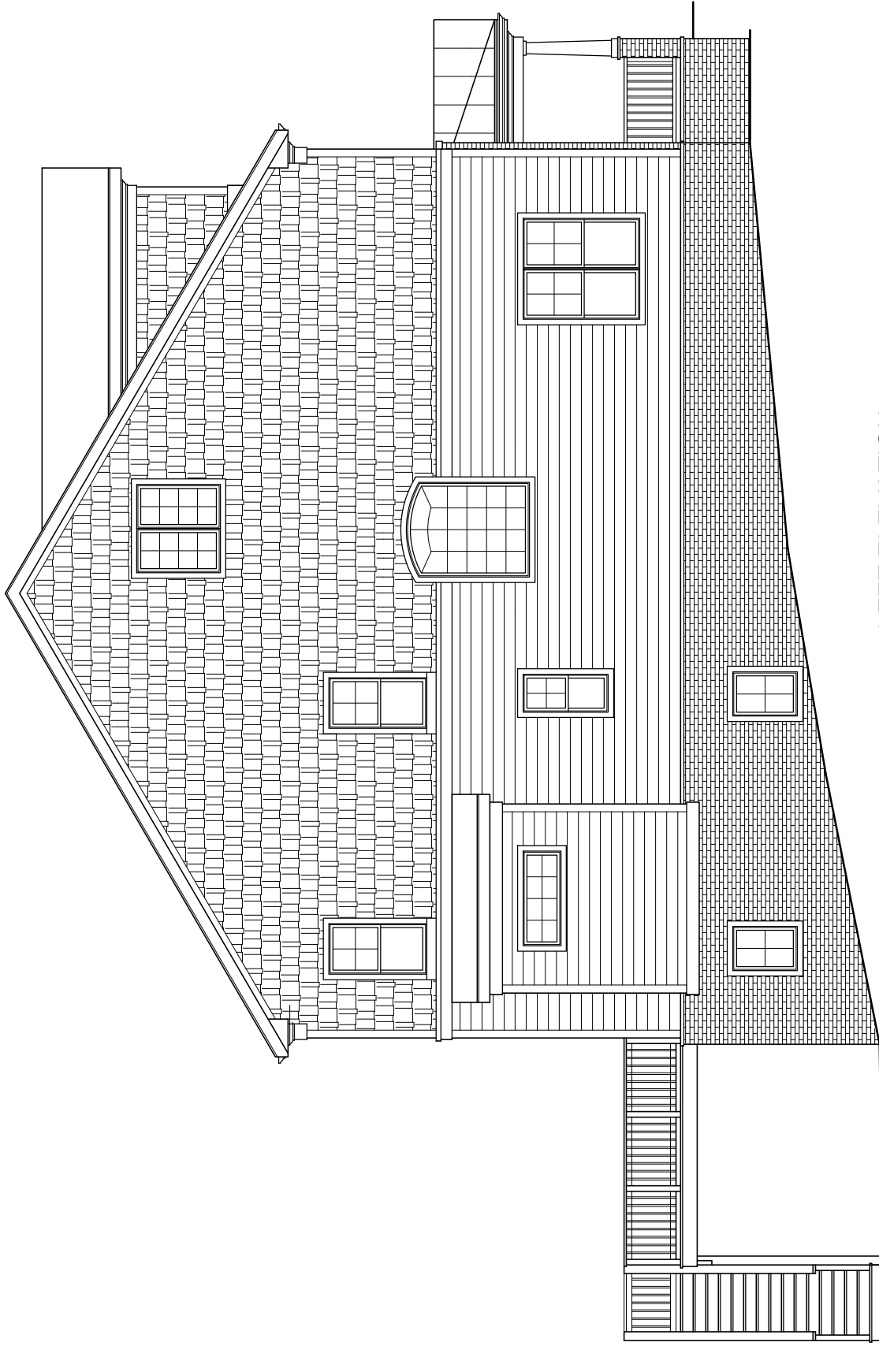
**BASEMENT PLAN**  
**2907 N. KENSINGTON STREET**  
 ARLINGTON, VIRGINIA 22207

|                      |                      |
|----------------------|----------------------|
| FIRST FLOOR =        | 2,089 SQ. FT.        |
| SECOND FLOOR =       | <u>2,345 SQ. FT.</u> |
| TOTAL 1st +2nd FLR = | 4,434 SQ. FT.        |
| ATTIC =              | 723 SQ. FT.          |
|                      |                      |
| FINISHED BASEMENT =  | 2,013 SQ. FT.        |
| UNFIN. BASEMENT =    | 67 SQ. FT.           |
| 2 CAR GARAGE =       | 525 SQ. FT.          |
| FRONT PORCH =        | 165 SQ. FT.          |
| DECK =               | 268 SQ. FT.          |

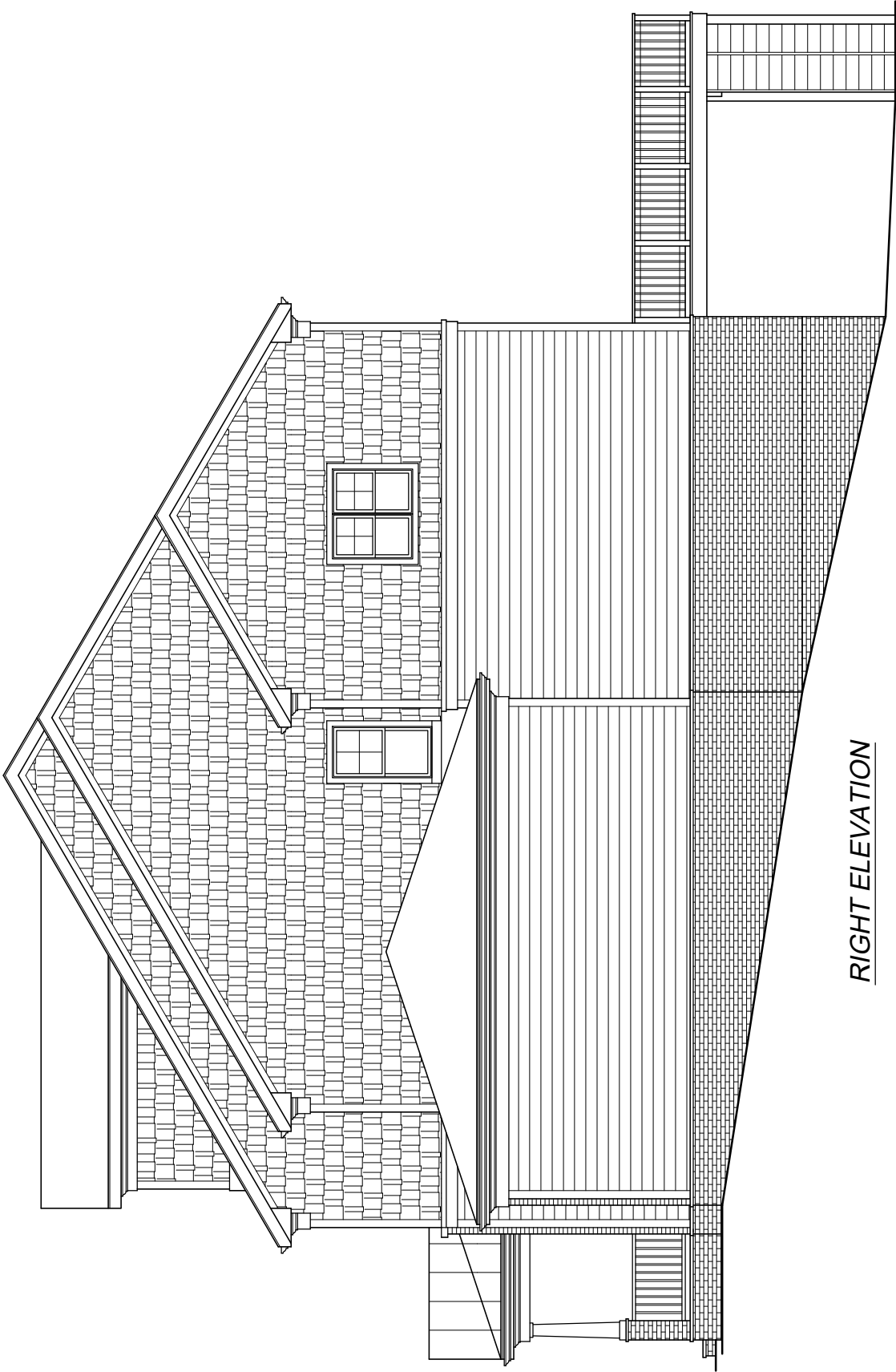


FRONT ELEVATION

2907 N. KENSINGTON STREET  
ARLINGTON, VIRGINIA 22207

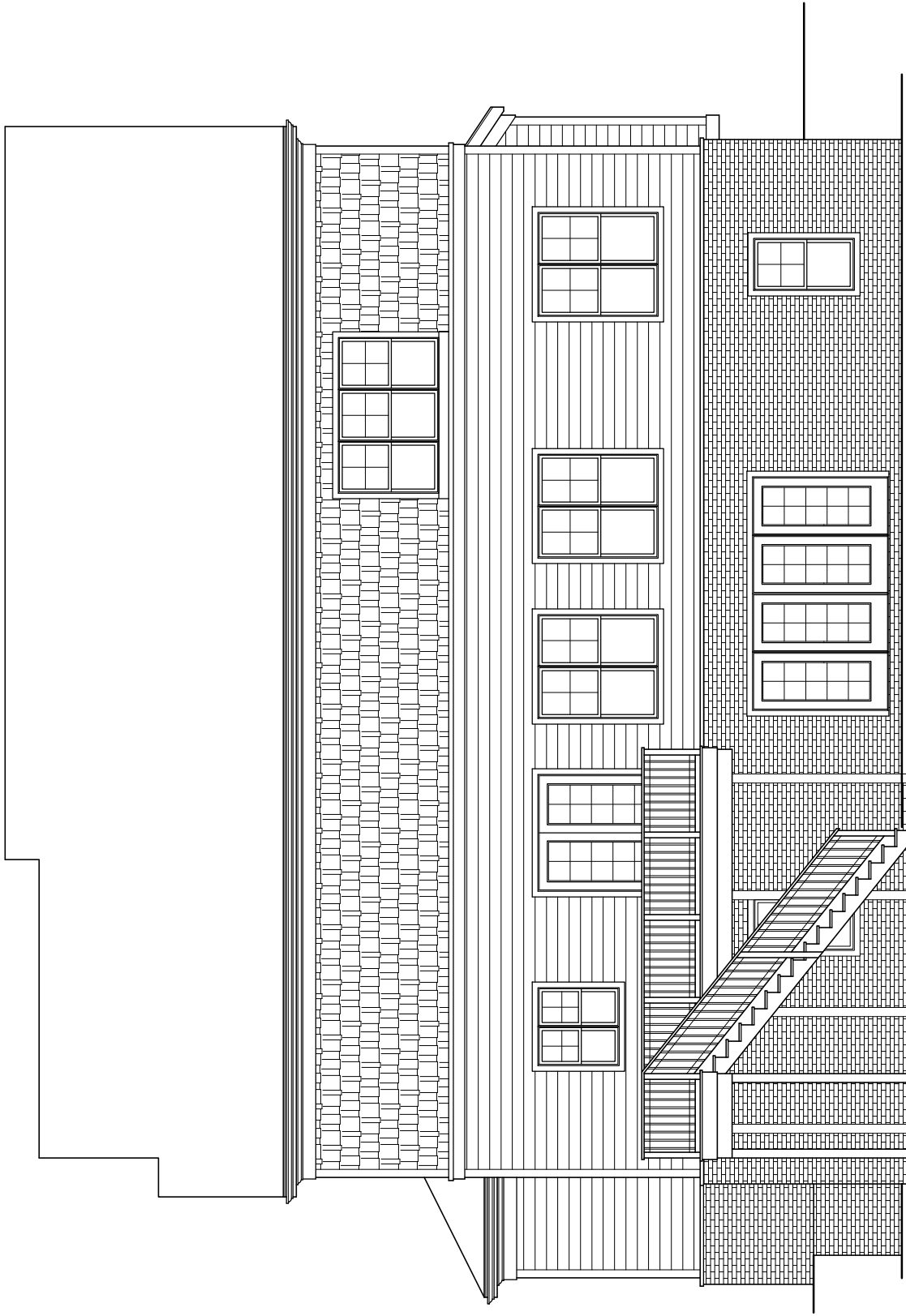


**LEFT ELEVATION**  
**2907 N. KENSINGTON STREET**  
ARLINGTON, VIRGINIA 22207



*RIGHT ELEVATION*

*2907 N. KENSINGTON STREET  
ARLINGTON, VIRGINIA 22207*



*REAR ELEVATION*

*2907 N. KENSINGTON STREET  
ARLINGTON, VIRGINIA 22207*